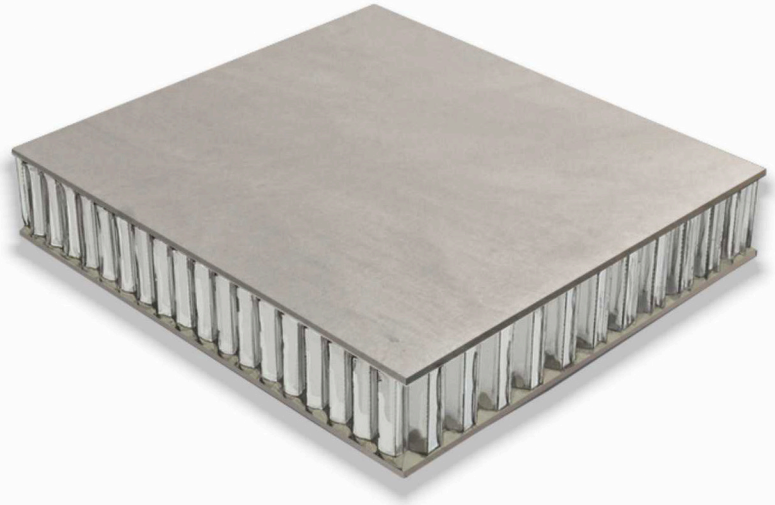


ALU - ALU LIGHT

ALU-ALU is a sandwich panel that is bonded with aluminum face material and with a core in aluminum honeycomb.

ALU-ALU honeycomb panel is a lightweight, structural composite sandwich board that adds strength, not weight, to primary and secondary panel structures, while saving time and reducing labor in production. It offers an exceptionally high strength to weight ratio, making these value-added sandwich panels an ideal substitute for Plywood and OSB in applications where weight reduction is required.

We also make honeycomb panels according to be needs of our clients for which dimensions and specifications are determined by our customers



Honeycomb Core Type		ALU Ø9.0 - 54kg/m ³ - 3003			
Total thickness mm		6.4 (1/4")	9.6 (3/8")	12.7 (1/2")	19.1 (3/4")
Skin thickness mm	Top	0.7	0.7	0.7	0.7
	Bottom	0.7	0.7	0.7	0.7
Core thickness mm		5.0	8.2	11.3	17.7
Weight kg/m ²		4.9	5.1	5.3	5.6
Temperature Resistance		Approximately -40°C to +80°			
Flatness		1.0 mm per meter			
Skin alloy		AL 1100 / AL 3003			

AVAILABILITY

Standard Dimensions
1220mm x 2440mm (other dimensions available on request) Max. width 1525 mm and Max. length 4000 mm
Panel Thickness
Made to order, thickness 6 mm to 200 mm
Standard Skin Thickness
0.5mm, 0.7mm, 0.8mm & 1.0mm (other thicknesses, alloys, powder coating & RAL colors available)

ACCREDITATIONS



Quality Management System in accordance to ISO 9001:2015



In conformity with the EU-MED directive, European Union Marine Equipment Directory, to allow use in vessels constructed, built, registered or operated in Europe 0098



C-class division according to SOLAS II-2, Reg. 3.10



IMO MSC 61(67) Fire Test Procedures Code compliant

Fire Tested in accordance to EN 13501-1

A2-s1, d0 classification

- A2 – non-combustible

- s1 – no smoke

- d0 – no flammable dropping

A2